

# CERTIFICATE OF LOCATION OF GOVERNMENT CORNER

NORTH QUARTER Corner of Section 36, Township 105, Range 39

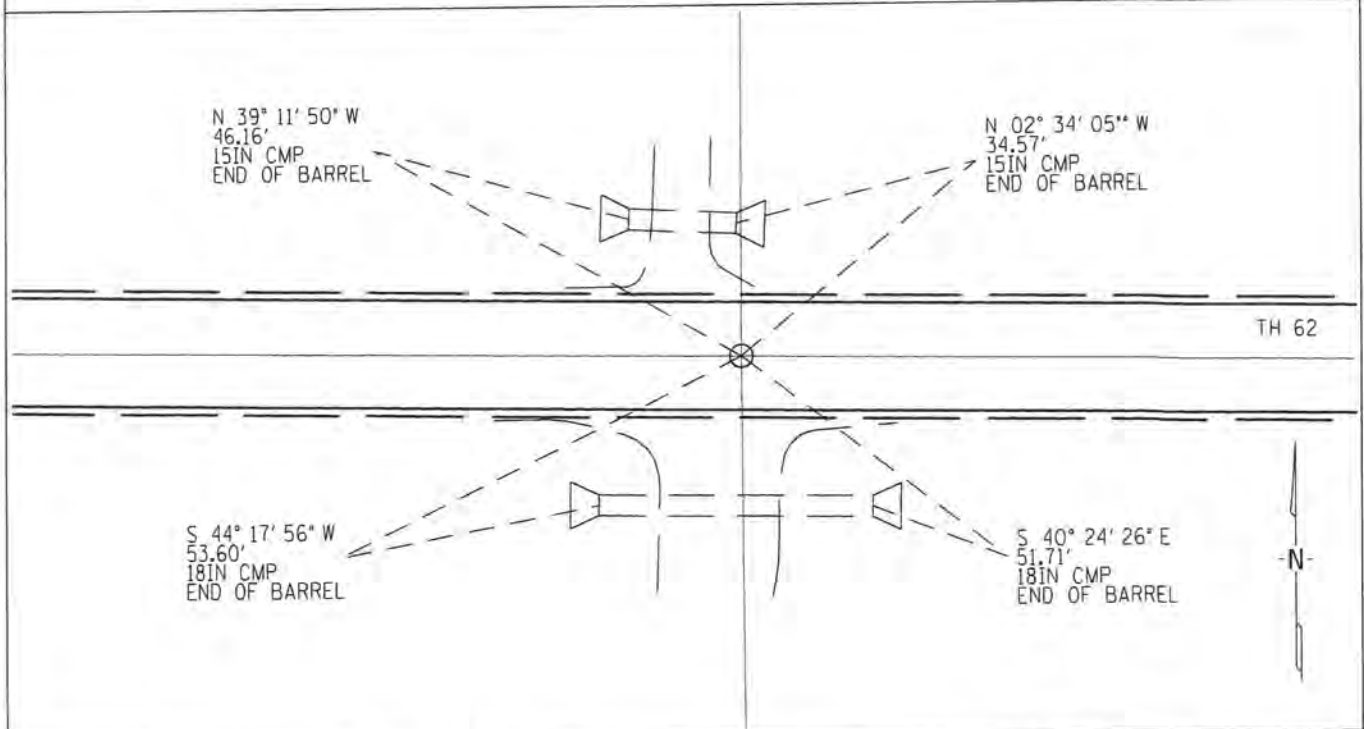
5TH Principal Meridian, State of Minnesota, County of MURRAY

At the corner location shown on the sketch:

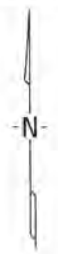
On \_\_\_\_\_ found a 5/8" IRON PIN WAS DESTROYED DURING CONSTRUCTION  
DATE

left monument as found     lowered monument     removed monument (explain)

On 5/15/2014 placed a 1/2" X 18" IRON PIPE WITH RLS CAP 44606  
DATE



TH 62



Statement of evidence for this corner location is on back of this page.

I hereby certify that this survey, plan, or report was prepared by me or under my direct supervision and that I am a duly Licensed Land Surveyor under the Laws of the State of Minnesota.

Signature \_\_\_\_\_ Date \_\_\_\_\_ License No. 44606

Title:     Land Surveyor     Professional Engineer     County Surveyor     County Engineer

**Statement of Evidence:** North Quarter Corner of Section 36, Township 105 North, Range 39 West, 5<sup>th</sup> Principle Meridian, Murray County, Minnesota.

- 1861 This corner originally was set by D. W. Wellman and S. S. Smoot, Deputy Surveyors during the GLO survey which was completed in 1861.
- 1951 January 31, The Minnesota Department of Highways, n/k/a The Minnesota Department of Transportation (MN/DOT) Highway Right of Way Index Map No. 13-66 shows the corner being marked by an in-place stone 6 feet south and at P.O.T. 374+16.7.
- 2011 In December, Sam DeLeo, LS 40341 of Kramer Leas DeLeo, P.C. found a 5/8 inch pin at the location consistent with that described above. Coordinate values were established on the monument using RTK/GPS methods as follows:  
Northing 105737.58  
Easting 353388.86  
Murray County Coordinates.  
NAD83 (2007 HARN Adj.)
- 2014 On May 15th, 2014, Kyle Klasen, LS 44606 of WSB and Associates set a 1/2" x 18" iron pipe capped with 44606 after the re-construction of TH 62. The coordinate value of the Corner was obtained from MnDOT, District 7 survey department and established by Mr. DeLeo in December, 2011.